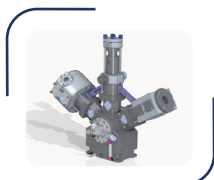
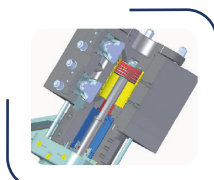
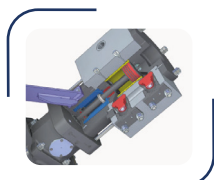
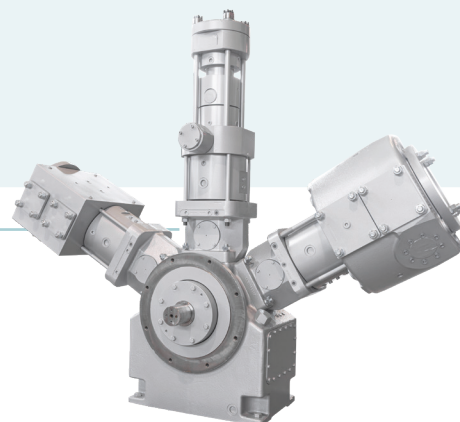


SERIES SW/H₂

Mechanical Compressor

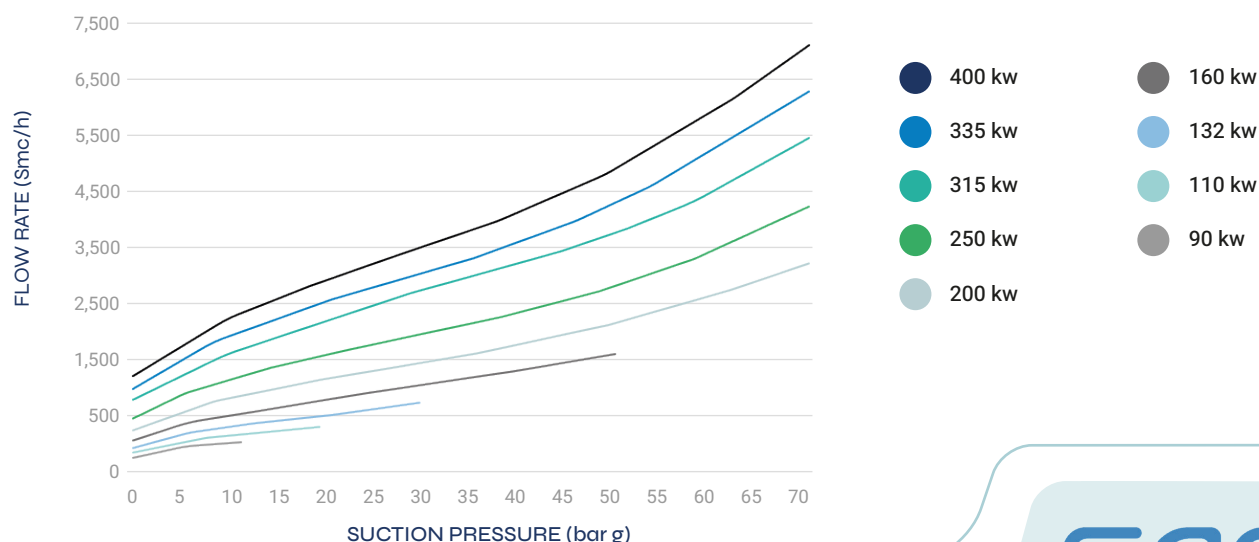
Large size Mechanical compressors equipped with 2 or 3 cylinders positioned at 60°. They are the **largest compression units** produced by SAFE and can operate in a wide range of suction pressures. They are suitable for all application with **low suction pressure**.



Datasheet

TECHNICAL FEATURES	UNIT OF MEASURE	VALUES
Modals	-	C90, C110
Cylinder	No.	2 ÷ 3
Stages	No.	1 ÷ 4
Suction Pressior	bar (psi)	0.3 ÷ 70 (4 ÷ 1,015)
Discharge Pressure	bar (psi)	Up to 200 (2,900)
Max Flow-rate	Scm/hr (SCFM)	7,000 (4,130)
Power	kW (Hp)	55 ÷ 400 (100 ÷ 540)
Speed	rpm	600 ÷ 1,000
Maintenance plan	Hours	8,000
Gas handled	-	H ₂
Cylinder features	-	Water cooled, non-lubricated
Lubrication system	-	Crancakes forced lubrication system
Oil consumption	-	OIL-FREE CONFIGURATION available as standard
Gas Leakages	%	0.1% of the rated capacity

Performance Graph



safe
GAS DESIGNED FOR YOU

✉ info@safegas.it

☎ +39 0516878211

🌐 www.safegas.it

📱 @Safe S.p.A

📷 @safegascompression

📺 @SAFEGasDesignedForYou

Via Ferruccio Lamborghini, 18
40017 San Giovanni in Persiceto BO, Italy
P.IVA 03224661201